

WINTERTHUR ANCIENT HISTORY

by Kathy Hall
for
Winterthur Museum
and Country Estate

Quilt designed by Jean Ann Wright
Quilt size: 83" x 101"



makower uk

1384 Broadway • New York, NY 10018
(800) 223-5678 • www.andoverfabrics.com

Winterthur Ancient History Quilt

*Introducing Andover Fabrics new collection: Winterthur Ancient History by Kathy Hall
for Winterthur Museum and Country Estate
Quilt designed by Jean Ann Wright*

A beautiful floral is the focus of this fabric collection named for the American country estate of the same name. Designed and owned by Henry Francis du Pont and his father, this beautiful home, set on a 60-acre naturalistic piece of land in Delaware, will take you back in time. A quilt made with this fabric collection fits the décor.

Quilt finishes 83" x 101"
12 pieced blocks 15" x 15"

Fabric Requirements

		Yardage	Blue	Brown
Fabric A	blocks, outer border	2 ³ / ₄ yards	5010-B	5010-N
Fabric B	sashing	1 ² / ₃ yards	5011-B	5011-N
Fabric C	center border	1 ¹ / ₈ yards	5012-O	5012-G
Fabric D	pieced border	³ / ₄ yard	5013-B	5013-G
Fabric E	blocks, sashing	³ / ₄ yard	5014-B	5015-Y
Fabric F	blocks	¹ / ₂ yard	1867-YL	1867-L2
Fabric G	pieced border	² / ₃ yard	5015-B	5014-Y
Fabric H*	inner border, blocks, binding	1 ⁷ / ₈ yards	5015-R	5014-O
Fabric I	blocks	² / ₃ yard	1867-Y	1867-B16
Fabric C	backing	7 ³ / ₄ yards	5012-O	5012-G

*includes binding

Cutting Directions

Note: Border measurements include extra length for mitering corners. WOF designates the width of fabric from selvedge to selvedge (approximately 42" wide).

Fabric A Cut (12) squares 9¹/₂" x 9¹/₂"
Cut (10) strips 6¹/₂" x WOF

Fabric B Cut (31) strips 3¹/₂" x 15¹/₂"

Fabric C Cut (10) strips 3¹/₂" x WOF

Fabric D Cut (44) squares 3⁷/₈" x 3⁷/₈" and cut in half once diagonally to make 88 half-square triangles
Cut (4) squares 3¹/₂" x 3¹/₂"

Fabric E Cut (68) squares 3¹/₂" x 3¹/₂"

Fabric F Cut (48) squares 3¹/₂" x 3¹/₂"

Fabric G Cut (44) squares 3⁷/₈" x 3⁷/₈" and cut in half once diagonally to make 88 half-square triangles

Fabric H Cut (48) squares 3⁷/₈" x 3⁷/₈" and cut in half once diagonally to make 96 half-square triangles
Cut (10) strips 1¹/₂" x WOF
Cut (10) strips 2¹/₂" x WOF for binding

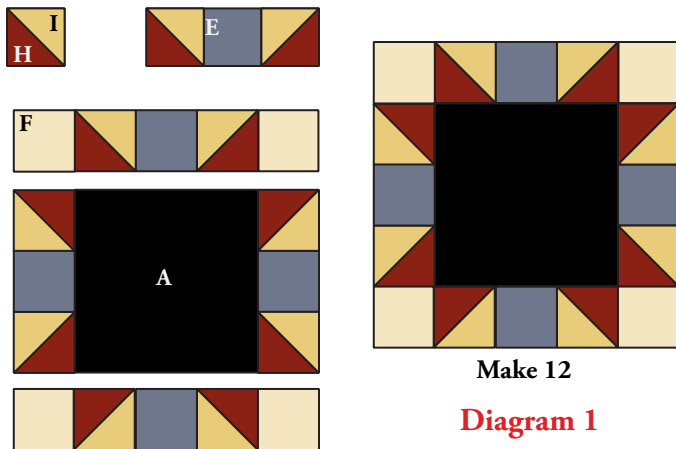
Fabric I Cut (48) squares 3⁷/₈" x 3⁷/₈" and cut in half once diagonally to make 96 half-square triangles

Backing Cut (3) panels 42" x 91" and piece to fit quilt top with 4" overlap on all sides

Winterthur Ancient History Quilt

Making the Star Blocks

1. Refer to Diagram 1 for block piecing.



Make 12
Diagram 1

2. To complete one block, sew a fabric I triangle to a fabric H triangle. Press seam allowance toward the fabric H triangle. Repeat to make eight H-I units total.
3. Sew a fabric E square between two H-I units to make a side unit. Press seam allowances toward the fabric E square. Repeat to make four side units total.
4. Sew a side unit to opposite sides of the fabric A square to make the center row. Press seam allowances toward the fabric A square.
5. Sew a fabric F square to each end of each remaining side unit to make two long units. Press seam allowances toward the fabric F squares.
6. Sew a long unit to opposite sides of the center row to complete one Star block. Press seam allowances toward the fabric A square.
7. Repeat steps 2-6 to complete 12 star blocks total.

Completing the Quilt Center

8. Refer to the Quilt Diagram for piecing the quilt center.
9. Join three Star blocks with four fabric B strips to make a block row. Press seam allowances toward the fabric B strips. Repeat to make four block rows.
10. Join three fabric B strips and four fabric E squares to make a sashing row. Press seam allowances toward the fabric B strips. Repeat to make five sashing rows.
11. Join the block rows with the sashing rows to complete the quilt center. Press seam allowances toward the sashing rows.

Quilt Assembly

12. Refer to the Quilt Diagram for adding borders.
13. Sew a fabric D triangle to a fabric G triangle along the diagonals to make a D-G unit. Press seam toward the fabric G triangle. Repeat to make 88 D-G units total.
14. Join 12 D-G units to make a 12-unit strip. Press seam allowances in one direction. Repeat to make a second 12-unit strip and two reverse 12-unit strips.
15. Refer to Diagram 2 for border piecing. Join a 12-unit strip and a reverse 12-unit strip with a $3\frac{1}{2}$ " fabric D square to make a pieced side strip. Press seam allowances toward the D square. Repeat to make a second side strip.

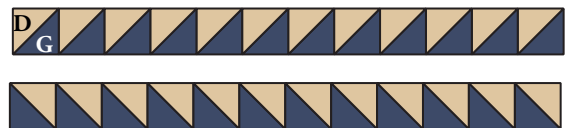


Diagram 2

16. Sew a side strip to opposite long sides of the quilt center. Press seam allowances away from the side strips.
17. Repeat step 14 to make two 10-unit and two reverse 10-unit strips. Repeat step 15 with the 10-unit strips to make the top and bottom strips. Sew the strips to the top and bottom of the quilt center. Press seam allowances away from strips.
18. Join the $1\frac{1}{2}$ "-wide fabric H strips on the short ends to make one long strip. Press seams open. Cut the strip into two 105" strips and two 87" strips.
19. Repeat step 18 with the $3\frac{1}{2}$ "-wide fabric C strips and with the $6\frac{1}{2}$ "-wide fabric A strips.
20. Sew a 105" fabric H strip to a 105" fabric C strip and add a 105" fabric A strip to make a side border strip. Press seam allowances toward the fabric A strip. Repeat to make a second side border strip.
21. Repeat step 20 with the 87" strips to make a top and a bottom border strip.
22. Fold the pieced center in half on both length and width; crease to mark centers, then unfold. Fold each border strip in half and crease to mark centers. Aligning folds, stitch the 105" border strips to the long sides and the 87" border strips to the top and bottom of the pieced center, beginning and ending $\frac{1}{4}$ " from corners; miter corners and trim excess fabric. Press seam allowances toward the strips.

Finishing the Quilt

23. Layer the quilt top with batting and backing. Quilt in the ditch of seams and as desired. Bind to finish the quilt.

Winterthur Ancient History Quilt



Quilt Diagram

Winterthur Ancient History

by Kathy Hall
 for Winterthur Museum and Country Estate



5010-B*



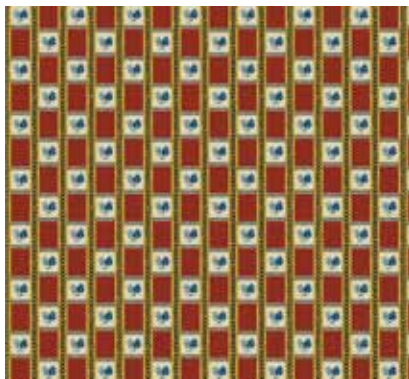
5011-B*



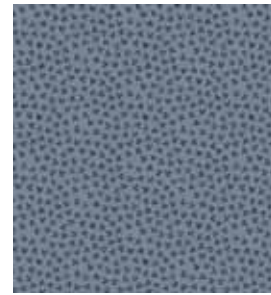
5013-B*



5015-B*



5012-0*



5014-B*



5015-R*



1867-YL*



1867-Y*



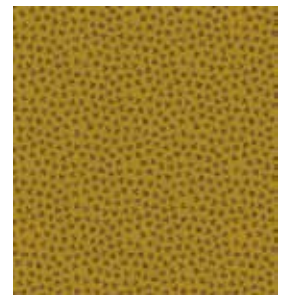
5010-N



5011-N



5013-G



5014-Y



5012-G



5015-Y



5014-0



1867-L2



1867-B16

*Indicates fabric used in featured quilt pattern. Fabrics shown are 25% of actual size.

Revised 5/10/10

Free Pattern Download Available at www.andoverfabrics.com